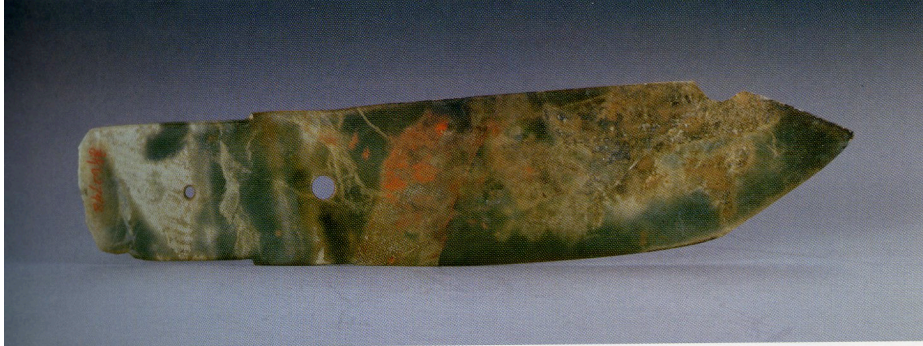


Silk in Shoes and Clothing: Finds along the Silk Road

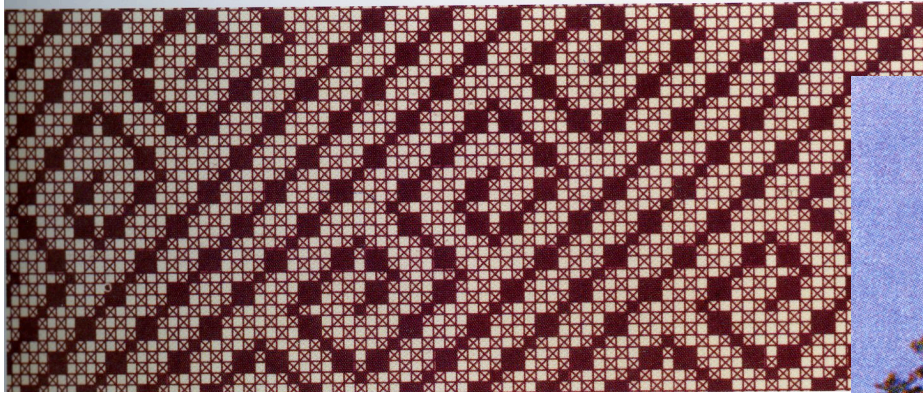
Click to add text

Helen Persson

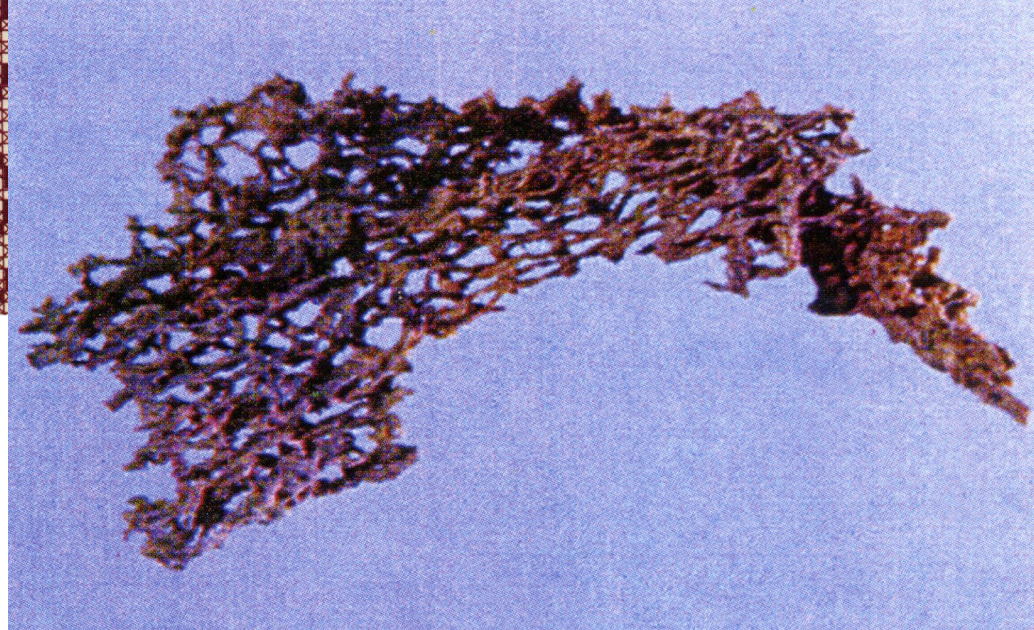
A large, stylized logo in a vibrant pink color. The logo consists of the letters 'W', '&', and 'A' in a serif font. The 'W' is tall and narrow, the '&' is smaller and more decorative, and the 'A' is tall and narrow, matching the 'W'. The logo is positioned in the lower right quadrant of the slide.



Silk textile fragment,
Henan province, ca. 3500 BCE



Jade dagger with imprint of
Patterned plain weave,
Shang dynasty 1600-1050 BCE





Silk skeins



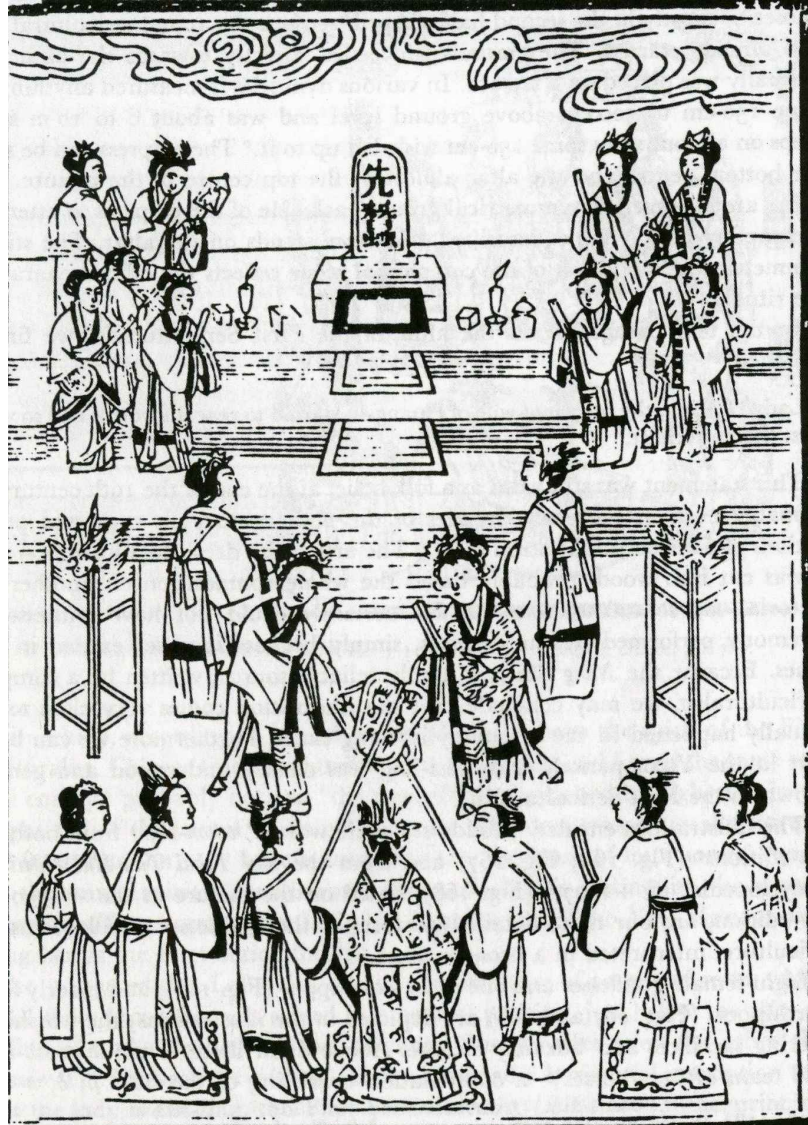
FE.67-2009,
c. 1840



Sericulture



Empress sacrificing at the altar of the First Sericulturalist

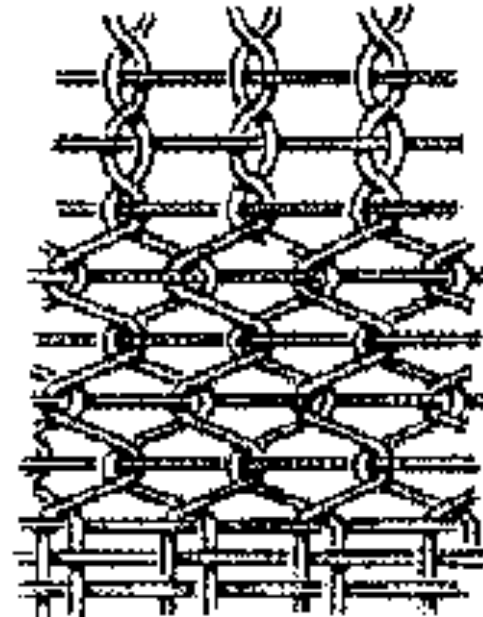


Yuan dynasty
1313 CE

蘇若蘭
春絲織就
迴文錦
於淚揮
成露井桐
人遠寄情書字
小柳絲
魚日晚
庭空

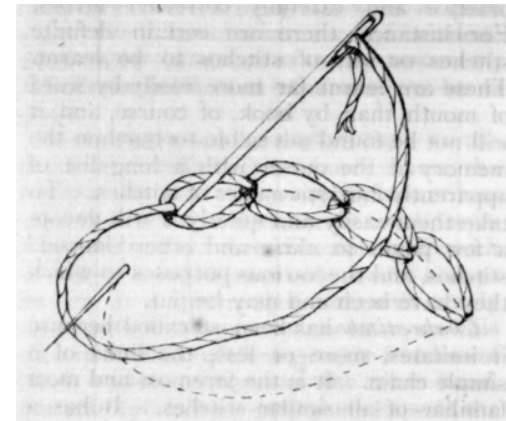


Chu tomb, Mashan, Hubei province (4th c BCE)



Gauze

Chu tomb, Mashan, Hubei province (4th c BCE)



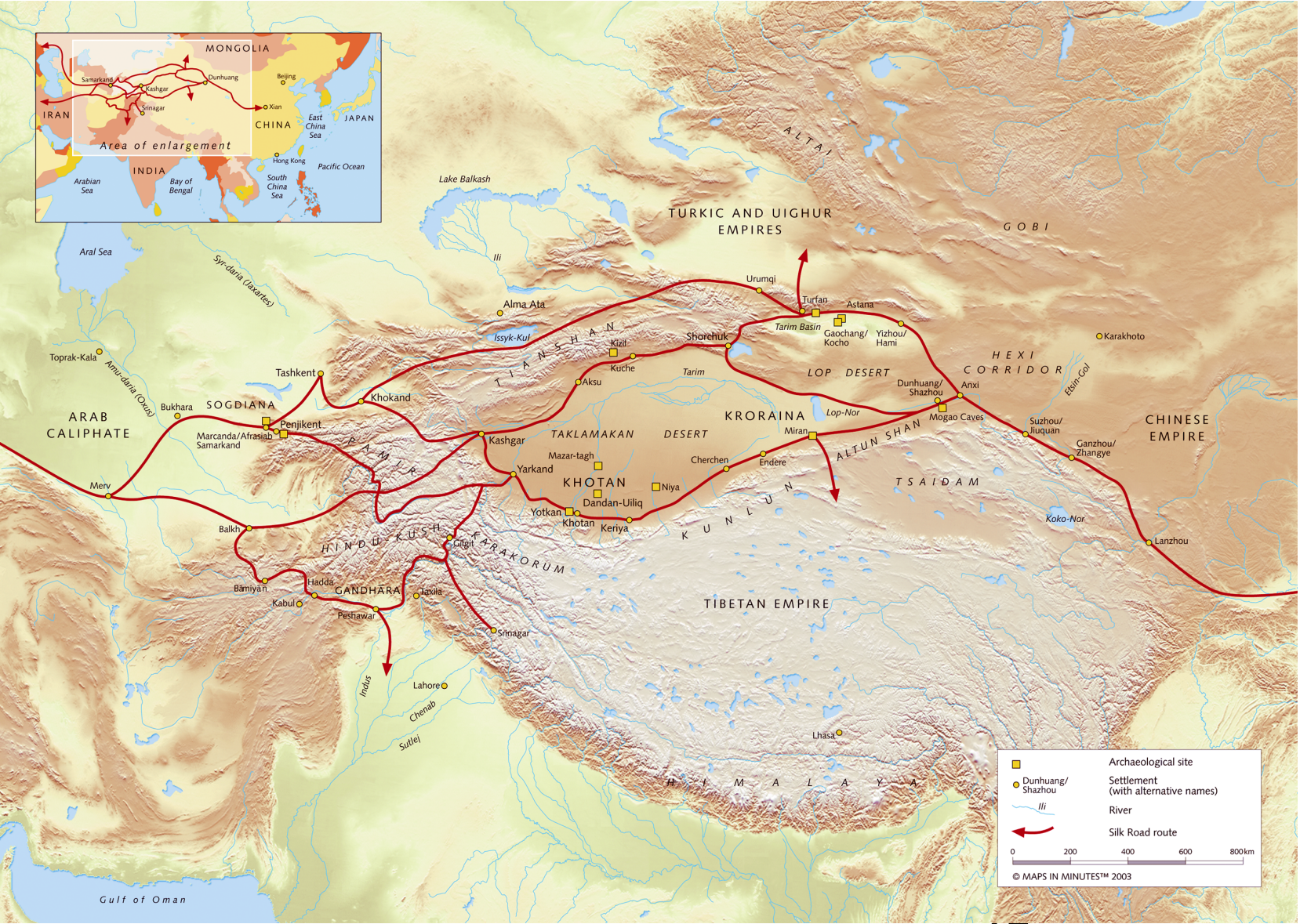
Chain stitch (suo xiu)

Pazyryk. 390-362 BCE



Chain stitch embroidery in silk on plain weave silk

Silk Roads



Sir Aurel Stein (1862-1943)



Rainbow silks



Finds from Mogao Grottoes





The Han Empire, 206 BCE – CE 220





LOAN:STEIN.344 (T.VI.b.i.009)



LOAN:STEIN.55 (T.VIII.002)



MAS.494, Mazartagh, CE 750-860



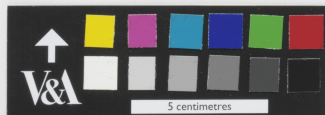
LOAN:STEIN.109 (Dar.006)
Darabzandong, CE 700-900



LOAN:STEIN.62 (L.A.VI.ii.0025), Loulan, CE 200-400



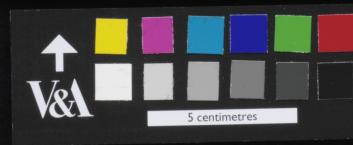
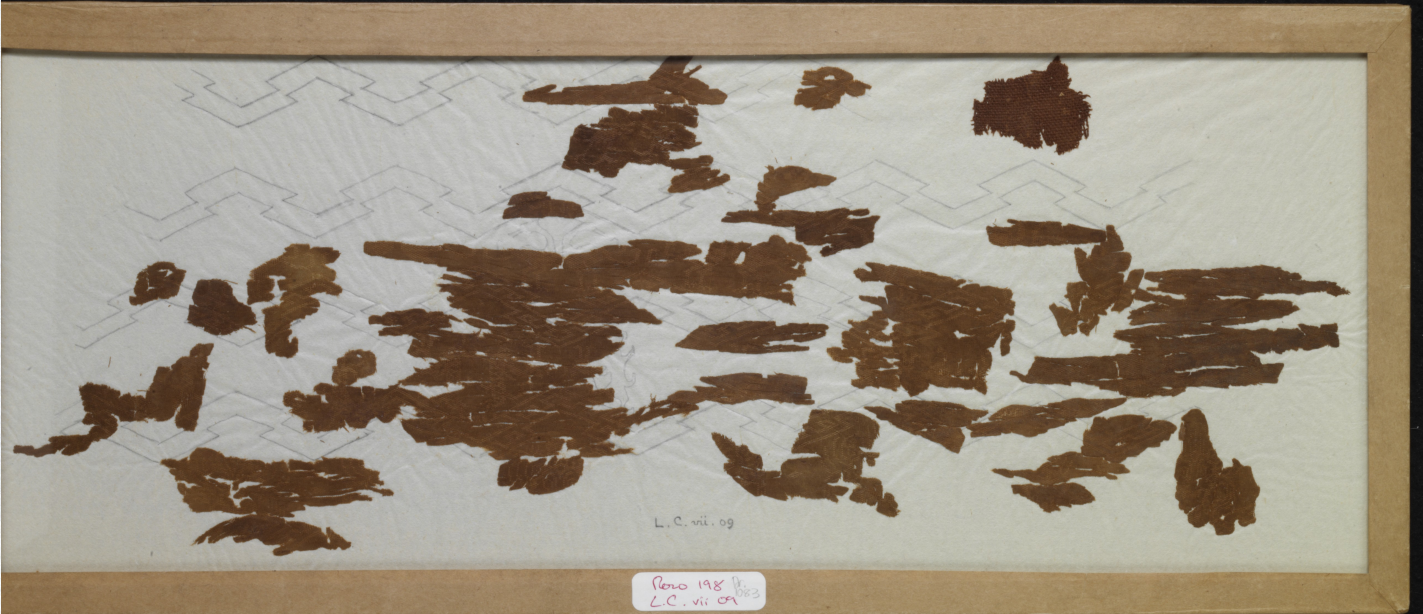
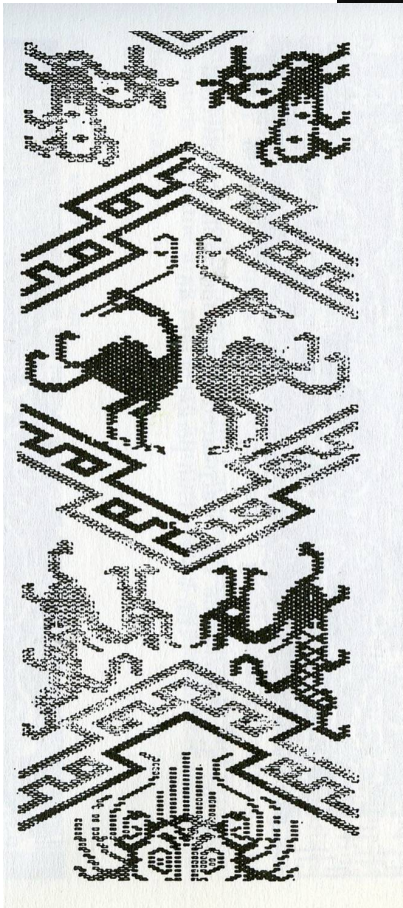
Skirt from Shanpula



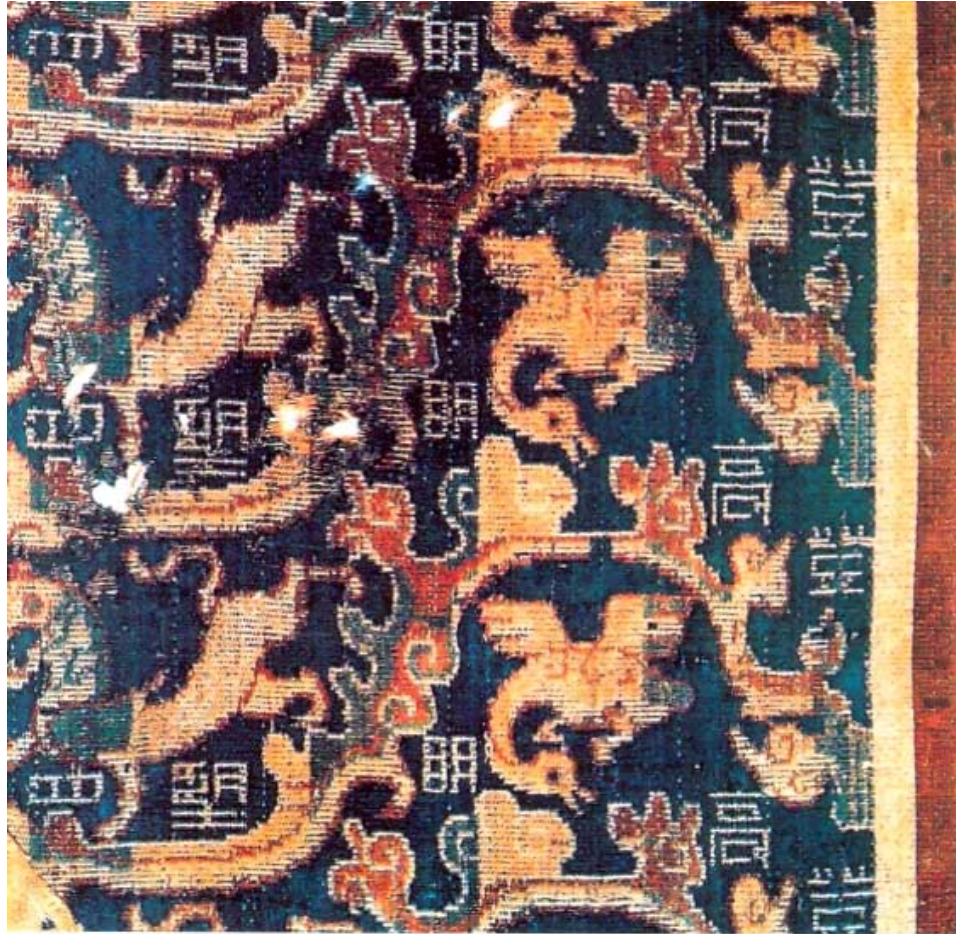
LOAN:STEIN.184 (N.XXIV.viii.001), Niya CE100-300

'Han damask'

LOAN:STEIN.198
(L.C.vii.009)



Han jin silk



China National Silk Museum

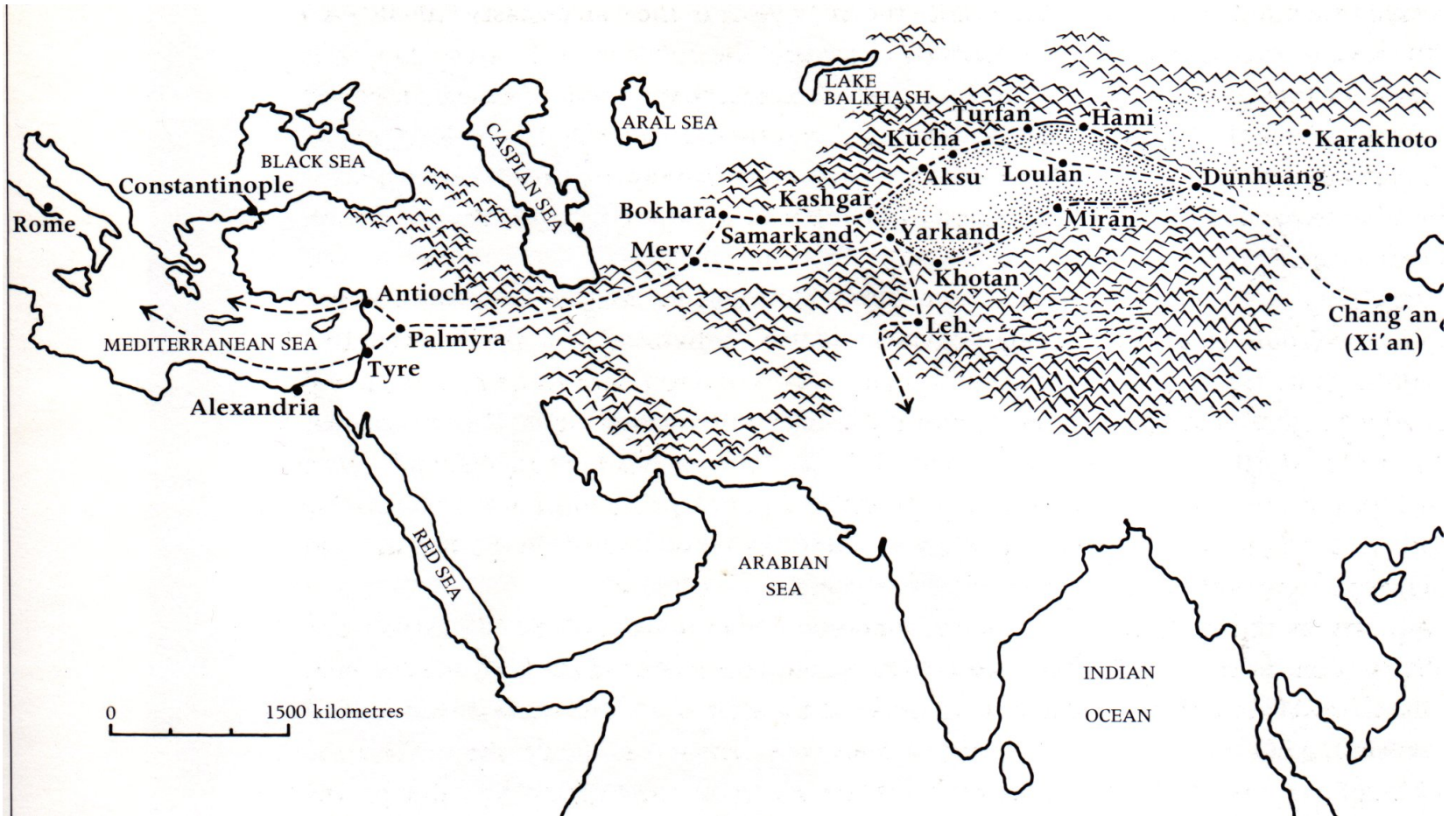
Mawangdui, Changsha, Hunan (168 BCE)



Han silks from Noin-Ula tombs, 50-25 BCE



The State Hermitage Museum



Reds – only purpurin



LOAN:STEIN.231 (L.A.VI.ii.
0045.b)



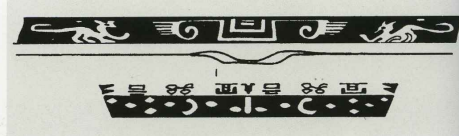
LOAN:STEIN.58 (L.B.IV.ii.0014)



MAS.717 (L.B.IV.ii.0016)



From Yingpan burial ground





LOAN:STEIN.630
(L.C.031.a)



From Gutai burial site

Arm protector from Niya





LOAN:STEIN.209 (L.Ciii.012)



Stein Collection, New Delhi



LOAN:STEIN.630 (L.C.031.a)

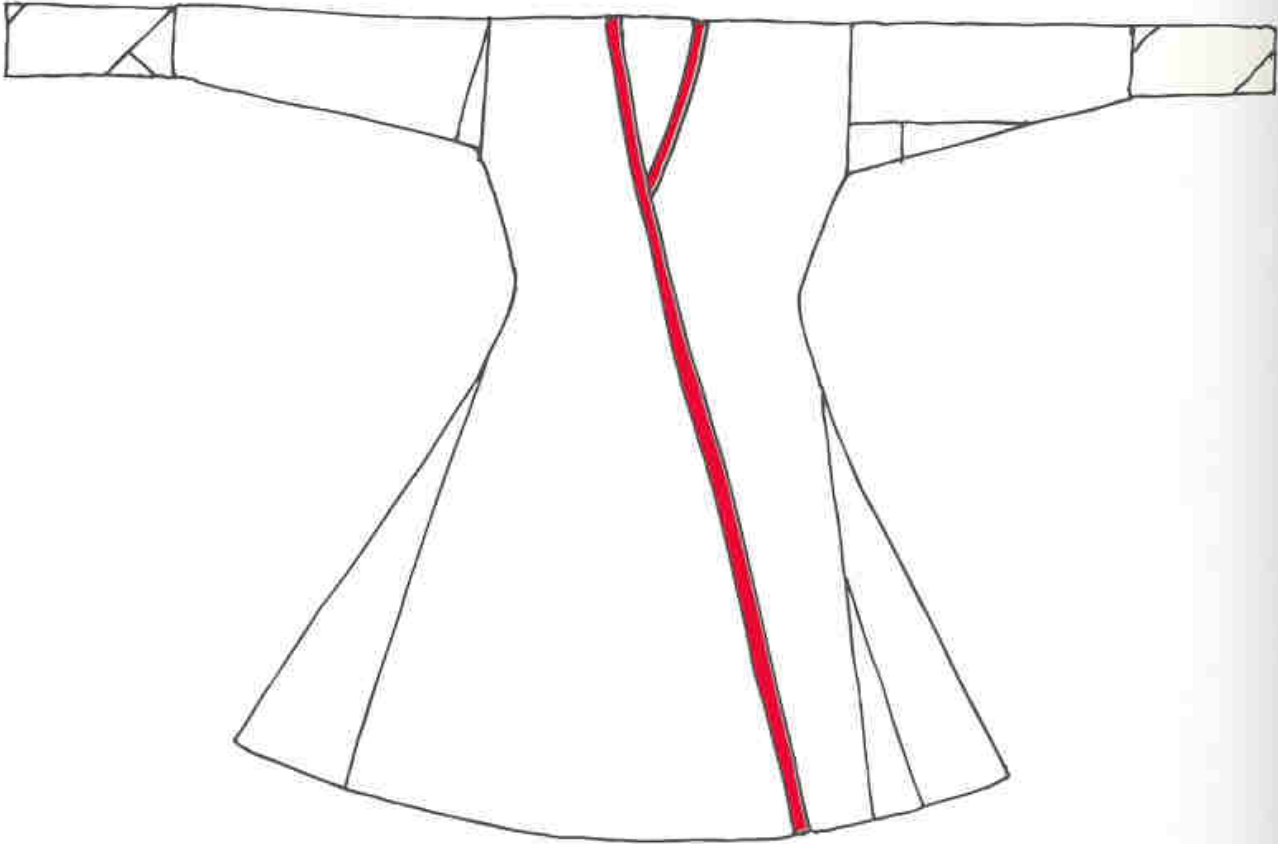
Han jin silk from Lop-Nor region

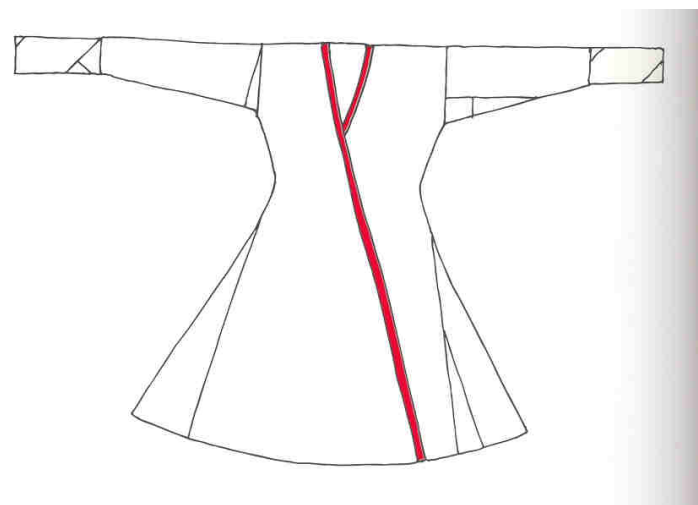


Cushion from Niya



Reconstruction of caftan





LOAN:STEIN. 127 (E.Fort.0014)

LOAN:STEIN.207 (L.C.i.02.a-b)



New Delhi, L.C.i.07

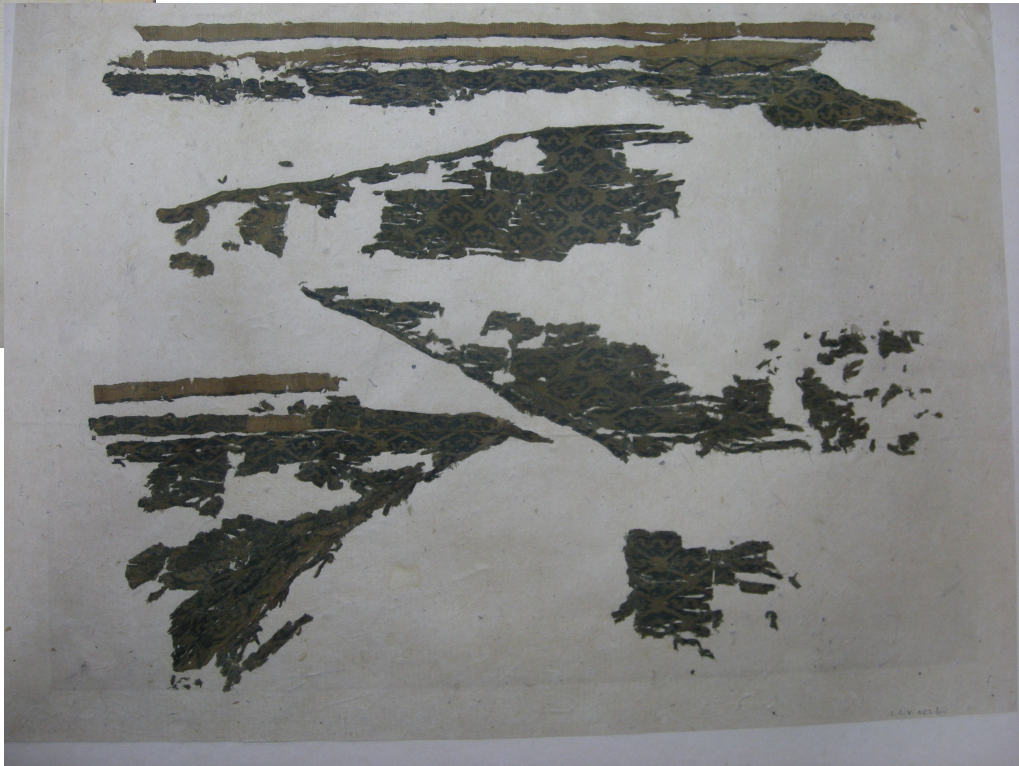
King of Jingjue



Silk caftan from Niya



National Museum in New Delhi



Cave 17, Dunhuang



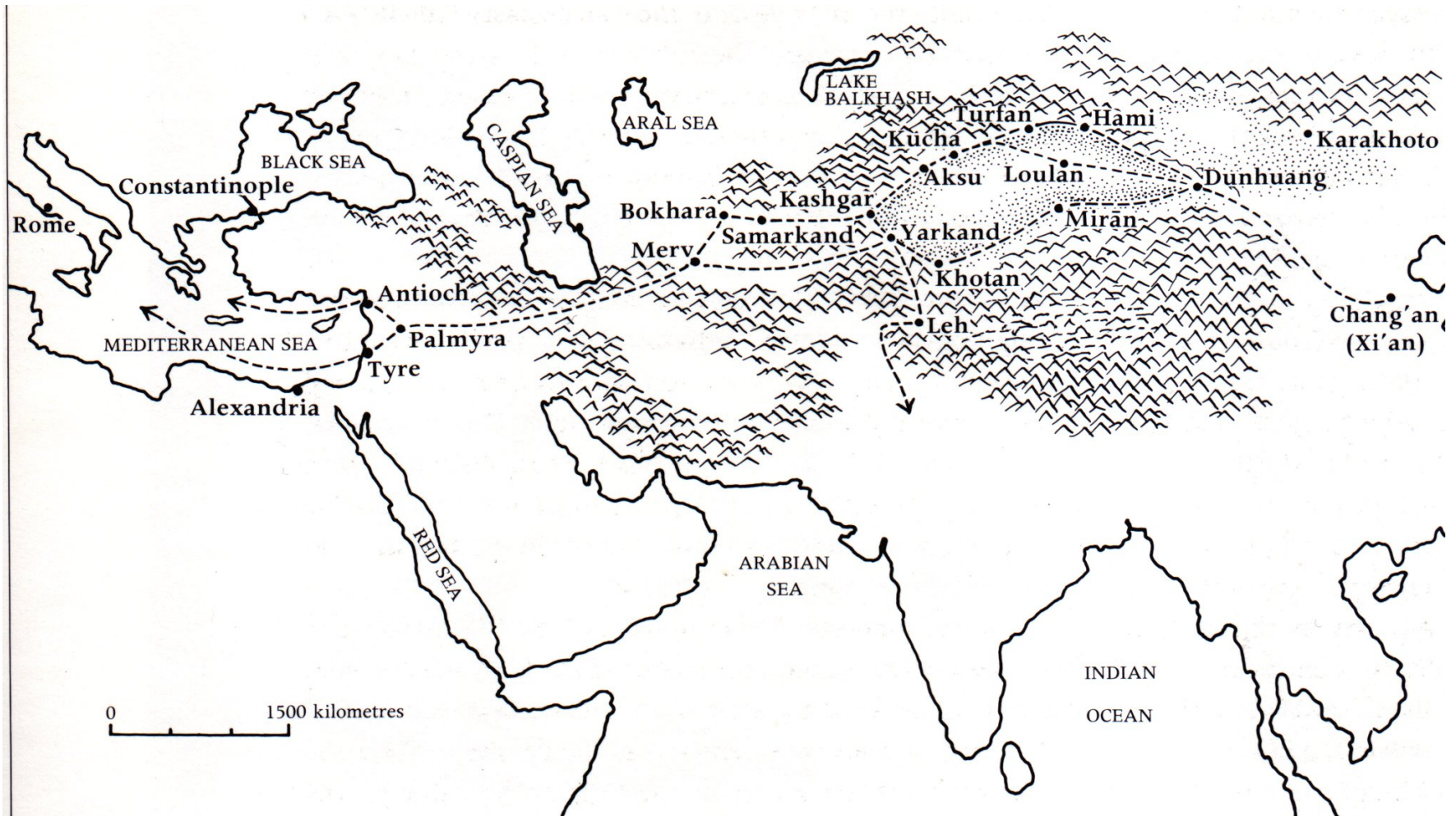
Banner head



LOAN:STEIN.490 (Ch.0086),
9-10th century



LOAN:STEIN.525 (Ch.00281)





LOAN:STEIN.594 (Ast.x.i.03)



C.815-1936



C.30-1943



C.879-1936



198,1022.196 and 197



LOAN:STEIN.679 (Ast.i.6.01)
Astana, 200-800 CE





Balalyk Tepe



a

Cleveland Museum of Art

MAS.862, Dunhuang



